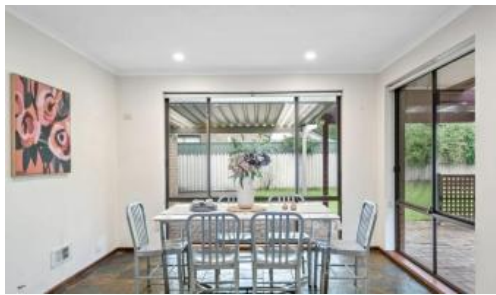




32 Sunnymeade Dr, Aberfoyle Park



Beautiful residence in large corner allotment

Premier Real Estate proudly presents this beautiful residence for rent.

Welcome home 32 Sunnymeade. Located in one of the most sought after family friendly suburbs in Adelaide this home is the one your family has been looking for.

Only 5 minutes to Aberfoyle Park shopping precinct and schools this home is a few minutes drive to all local amenities.

Offering plenty of natural light and space the flexible floor plan offers a large open plan kitchen and living area with downlights. The 4th bedroom can be easily used as studio, gym or teenage retreat.

Features you will love:

- Large corner block with green lawns & trees
- Well maintained and updated spacious home with plenty of light
- Downlights in Kitchen & Dining area
- Split system heating and cooling
- Flexible floor plan
- Shed/workshop
- Close to all schools shopping center and local amenities

To apply for this property click on "Apply Now"

Disclaimer: Whilst all information has been obtained from sources we

🛏 4 🚿 1

Price	\$500-\$510
Property Type	Rental
Property ID	10

Agent Details

Eduard Gjergji - 0492427777

Office Details

Premier Real Estate
12th floor/760 Anzac HwyGlenelg
SA 5045, Adelaide, SA, Australia,
South Australia Glenelg, SA, 5045
Australia
0492427777



believe to be accurate, Premier Real Estate Pty Ltd and agents make no statement, representation or warranty, and assume no legal liability in relation to the accuracy of the information provided. All interested parties should seek independent advice.

RLA 314485

The above information provided has been furnished to us by the vendor/s. We have not verified whether or not that information is accurate and do not have any belief in one way or the other in its accuracy. We do not accept any responsibility to any person for its accuracy and do no more than pass it on. All interested parties should make and rely upon their own inquiries in order to determine whether or not this information is in fact accurate.